

# PictureJet





# PictureJet

**IP-3020**

**IP-3120**

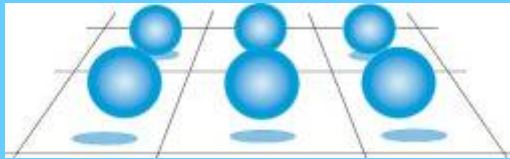
## **PictureJet – A printer making no compromises**

- Output Speed second to none: 44 seconds per A1 size
- Highest Resolution for CAD: up to 2880 dpi
- Unique High Quality output using Pigmented Black ink
- Extreme User Friendliness :
  - Front operation for all day-to-day actions ensuring efficient work space layout
  - Inks and media monitoring function
- Direct HP-GL/HP-GL2 addressable
- Standard Interfaces: Ethernet and USB 2.0

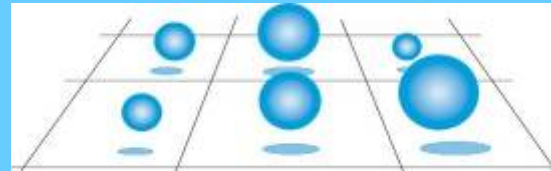
# PictureJet IP-3x20

## State-Of-The-Art InkJet Technology

- Incorporates new generation “Wide Model” Print Head
- 4 Colour sections in 1 head:  $4 \times 360 = 1440$  nozzles
- High-class drop-on-demand micro Piezo variable drop inkjet technology accessible via Windows system driver
- Tuned waveforms
- High-speed drive mode ( 44 seconds per A1)
- No routine head replacements required.



Normal Technology



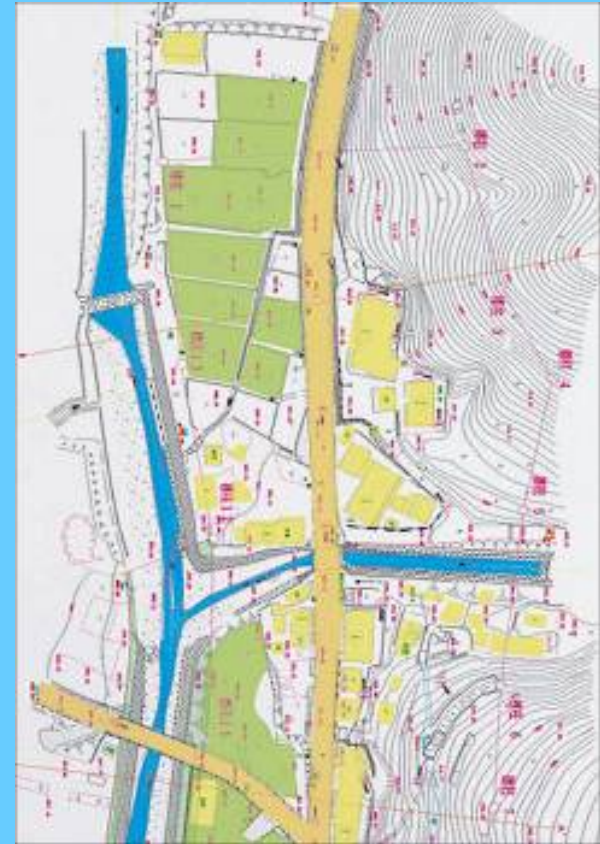
Variable Dot Technology

# PictureJet IP-3x20

## Highest resolution in its class

□ Various print resolutions available for various applications:

- ✓ 360 x 360 dpi
- ✓ 720 x 360 dpi
- ✓ 720 x 720 dpi
- ✓ 1440 x 1440 dpi
- ✓ 1440 x 2880 dpi





# PictureJet IP-3x20

## Pigmented Black Ink

- Special pigmented black ink best suited for CAD
- Crisp and sharp line plotting onto low-cost media
- Excellent output quality & quick drying
- Good UV stability over time



# PictureJet IP-3x20

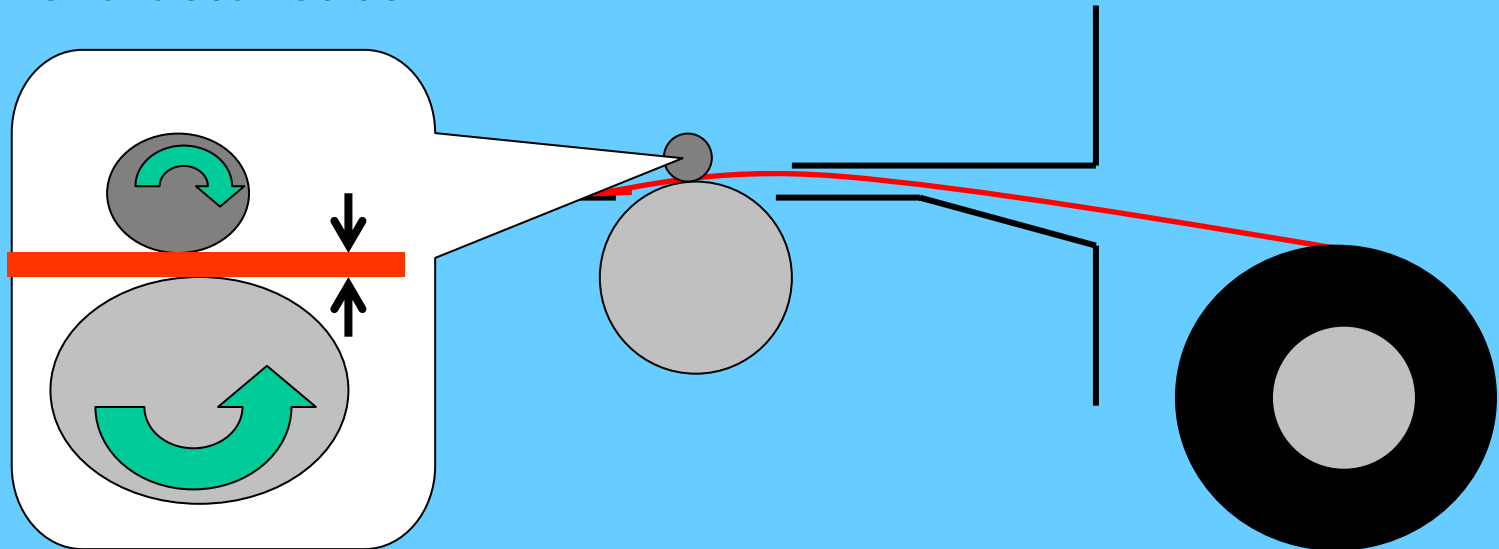
## Media Compatibility

- ❑ Optimized paper handling mechanism:
  - Easy media handling (for ease of uses)
  - Stability
  - Plotting speed
  - Output quality and accuracy
  
- ❑ Adjustable print head height, step adjust, vacuum fans according to the used media type
  - Presets for: plain paper, tracing paper, film, coated paper, and glossy presentation paper
  - Custom settings for ink firing level, vacuum fan strength and head height for non-standard media

# PictureJet IP-3x20

## Media Compatibility – Step Adjust Feature

- Media feed adjust linked to typical media type characteristics.



※ Cross sectional view from the side of Plotter



# PictureJet IP-3x20

## Front Operation Possible

- ❑ Ink cartridges and media roll are positioned at the back side but...
- ❑ Recurrent operations like media loading and ink cartridges replacements can be alternatively done from the front or the rear side
  - Ink cartridge guide prevents from mixing incorrect position



# PictureJet IP-3x20

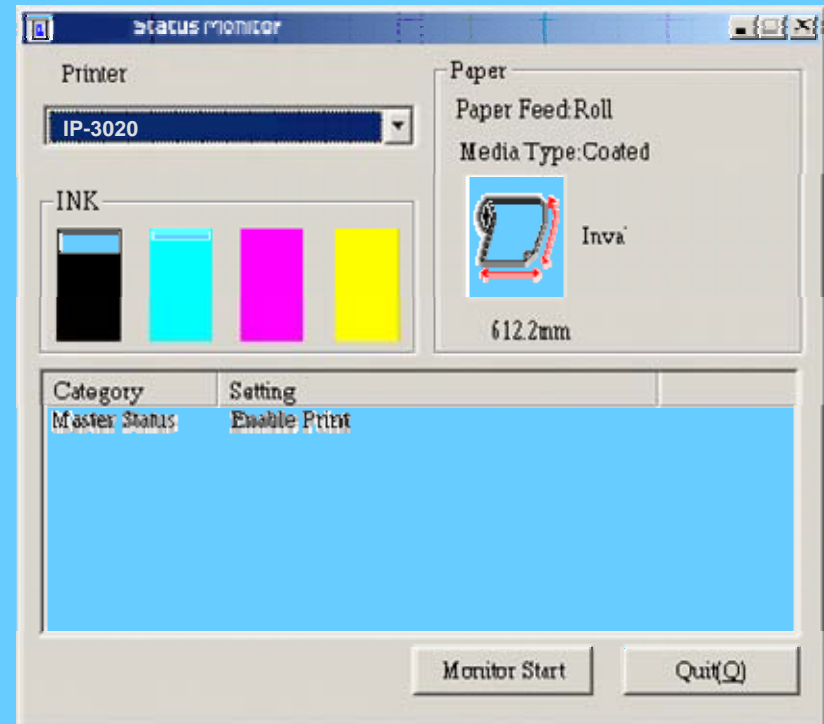
## Windows System Driver

- Windows 95, 98, NT4, 2000, XP
- Autocad HDI driver
- Available in local languages
- Direct access to all media output settings
- Optimum adjustment for each data type & application:  
output and rasterization are improved with quick settings  
available for vector, raster, mixed data, quick draft...
- Colour adjustment easily accessible



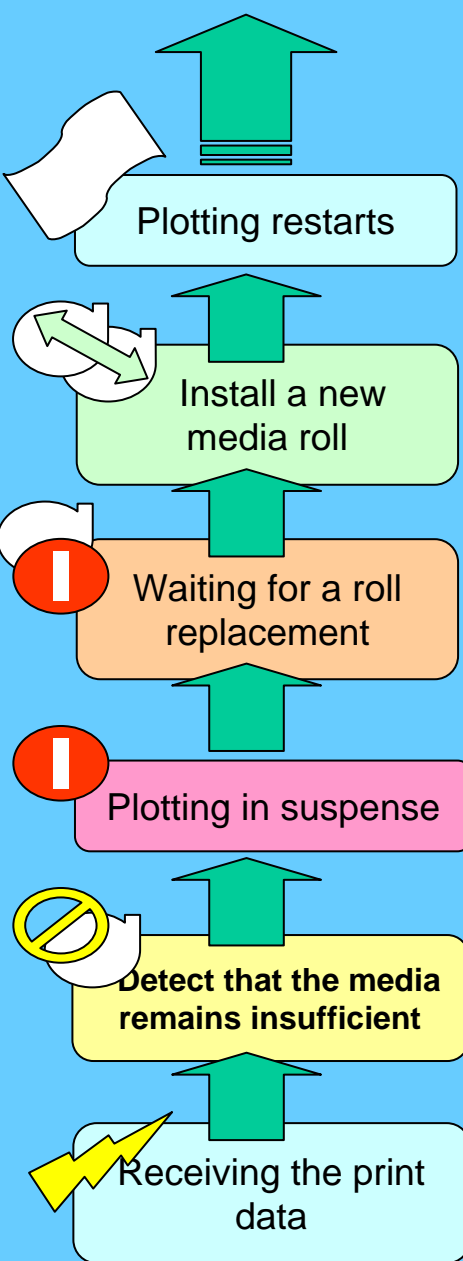
# PictureJet IP-3x20 Printer Status Monitoring

- The printer status can be viewed via the Status Monitor screen from the Windows driver.
- Regardless of the plotter location, status can be checked over the network.
- Status monitor includes ink level and remaining media.



# PictureJet IP-3x20

## Ink & Roll Media Level Management



- Prior to output start, the PictureJet judges if the remaining ink level & media supply can cover the transmitted plot data.
- If not, the plotter calls attention to exchange ink cartridges and/or load a new media roll before starting to print.
- Data is buffered as long as consumable supply is not OK.



# PictureJet IP-3x20

Standard HP-GL & HP-GL/2 embedded

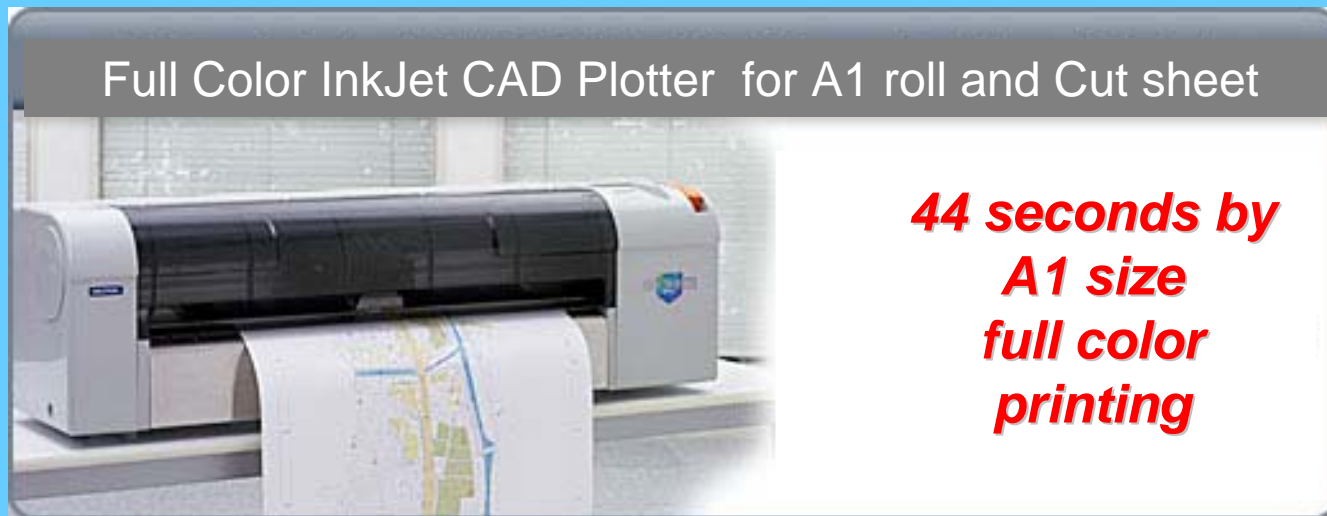
- HP-GL & HP-GL/2 Emulations are state-of-the-art.
- Full compatibility is ensured
- Guaranteed efficient data transmission and reproduction of ragged-free high quality line plot at high speed



# PictureJet IP-3x20

## Desktop Possibility

- The IP-3120, A1-Size unit can be installed as a desktop printer
- Size: W 1.186 mm x D 496 mm x H 352 mm
- Weight: 39.5 kg

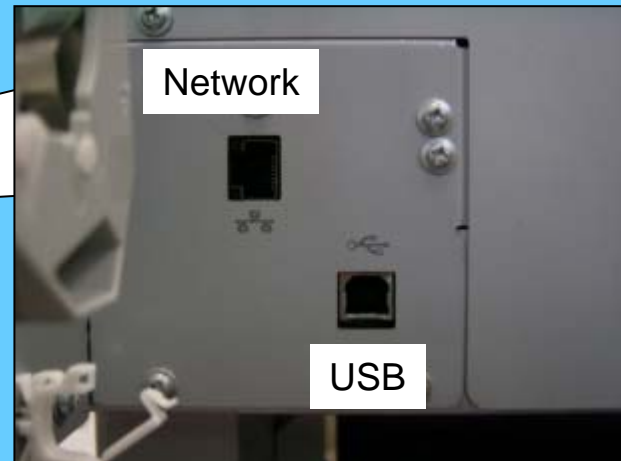




# PictureJet IP-3x20 Interfaces

## □ Standard:

- Network 100BASE-TX / 10BASE-T
  - USB 2.0 (1.1)
- Plug & Play feature supported  
in case of one-to-one connection.

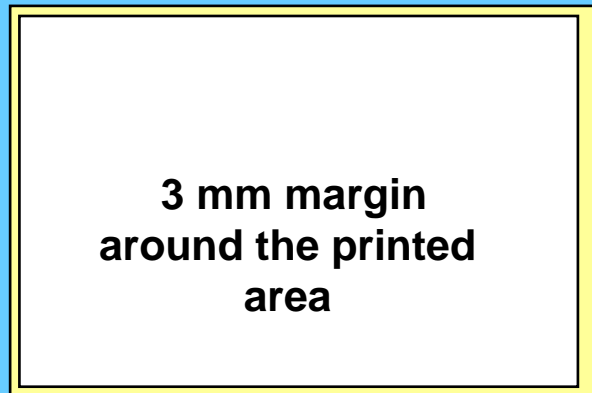




# PictureJet IP-3x20

## Reduced Plot Margins – Expanded Hard Clip

- ❑ Roll Media: Only 3 mm print margin along the sides
- ❑ For cut sheet:
  - Front, Right and Left: 3 mm
  - Back: 17 mm



IP-3x20

Roll paper



IP-3x20

Cut sheet

# PictureJet IP-3x20

## Speed Specifications

Specification	IP-3020	IP-3120
High Speed 360	1 min 31s (A0)	44 s (A1)
Highest Quality 360	3 min 16 s (A0)	1 min 18 s (A1)
Standard 720	5 min 35 s (A0)	2 min 23 s (A1)
High Quality 720	10 min 3 s (A0)	4 min 16 s (A1)
Standard 1440	22 min 13 s (A0)	9 min 24 s (A1)
Highest Quality 1440x2880	1h 37 min 22 s (A0)	40 min 19 s (A1)

# PictureJet IP-3x20

## Specifications (1)

Specification	IP-3020	IP-3120
Media Width mm	1080	610
Print Width mm	1074	604
Paper Gap Low/High	1.3 mm / 2.1 mm	1.3 mm / 2.1 mm
Ink Type K / CMY	Pigmented / Dye	Pigmented / Dye
Distance Accuracy	$\pm 0.25$ mm or $\pm 0.1\%$	$\pm 0.25$ mm or $\pm 0.1\%$
Interfaces	USB & Ethernet 10/100	USB & Ethernet 10/100
Memory Mb	256	128
Emulations	HP-GL, GL2 & RTL-Pass	HP-GL, GL2 & RTL-Pass
Noise Level dB	< 53 dB	< 53 dB

# PictureJet IP-3x20

## Specifications (2)

Specification	IP-3020	IP-3120
Dimensions (WxDxH) mm	1766 x 662 x 983	1186 x 496 x 983 1186 x 496 x 352 (DeskTop)
Weight kg	58.7 (Printer) 18.8 (Stand)	39.5 15.0